

CONCETTA LA MAZZA



1936.

,

1950,

"

"

,

,

-

,

.

,

,

-

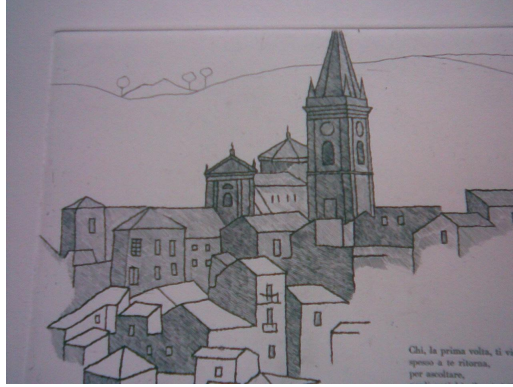
,

,

,

,

.



!

NINO BELVEDERE



"

,

1938,

,

"

-



,

,

,

,

.

:

.

,

.

.

,

,

,

,

,

1934.

:- , - , ,

-



1936. ,

, ,

,

.

,

,

,

,

,

:

.

.

.

.

,

:"

" (

).

.

,

4

,

.

,

1. The first part of the document discusses the importance of maintaining accurate records of all transactions and activities. It emphasizes that this is crucial for ensuring transparency and accountability in the organization's operations.

2. The second part of the document outlines the various methods and tools used to collect and analyze data. It highlights the need for consistent data collection practices and the use of advanced analytical techniques to derive meaningful insights from the data.

3. The third part of the document focuses on the role of technology in data management and analysis. It discusses how modern software solutions can streamline data collection, storage, and processing, thereby improving efficiency and accuracy.

4. The fourth part of the document addresses the challenges associated with data management, such as data quality, security, and privacy. It provides strategies to mitigate these risks and ensure that the data remains reliable and secure throughout its lifecycle.

5. The fifth part of the document concludes by summarizing the key findings and recommendations. It stresses the importance of a data-driven approach in decision-making and the need for continuous monitoring and improvement of data management processes.

1938,

(!)

1939,

1941.

(),

1. 1942.

. 1. 1942.

:-

?).

- ? - (

,

,

.

,

.

,

.

.

,

,

,

.

.

,

.

.

.

.

.

.

,

.

.

,

,



2. 1944. 66. '44 '45 '46

- ,



, ,

- ,

-

-

,

-

-

-

:

-

-

:

,

,

,

,

).



1945.

1946.

()



).

(

. : " ? ?" .

.

.

.

,

.

:-

,

,

,

,

-

,

,

.

.

,

.

.

,

,

,

,

,

.

,

,

,

,

,

,

.

3

.

.

:

,

" " ().

.

:"

?"

?"

,"

."

..."

8

8

!)

8



1948.

. 9.

. 11

" " " " ,
 " "
 ?" : - , - (
 ,) .
 ,
 . () .
 4.
 , :
 - " !"
 " " .
 - ()
 - .
 ...
 , .
 , .
 , .
 , .
 , .
 , .

'

- .

" "

" "

"

?

!"

,

20.

12.

8.

"

?

?" " -

" " ,
" .

14.

: " ,

" .

"

" () .

"

!

!"



,

.

:

.

,

"

() ,

:

.

,

.

-

-

"

.

,

.

,

.

"

"

22

,

50

1951.

17.

?

?

?

?

?

•
• , ,
, ,
• ,



87

8.

, , 11.000
 . 24 , 12
 .
 .
 5 .
 .
 , . '53 ,
 .
 : .
 , ,
 . 6-13
 13-21.
 .
 .
 , .
 .



,

7,



13

1. 1954.

2

15,

16.

1950.

•

•

• " ,

•



13 21.

. 21

!"

:

14-

,

"

"

.

.

.

.

.

:

"

.

"

26.

"

,

,

"

:

"

,

.

.

.

1955.

:"

?",

.

.

:"

"

:"

14

.

.

,

,

,

"

"

,

.

,

,

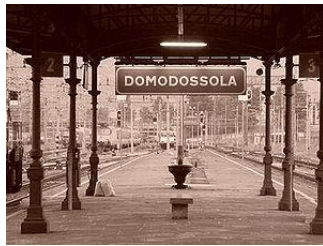
16.

19.

9

"?"





12.15

'53.

23



-

'50.

'53,

:

.

,

.

,

.

.

,

.

.

.

"

"

.

,

.

.

5

:

,

,

.

.

.

.

:

.

,

.

.

,

,

.

.

’
.
,
.
,
.
:
” ().

.
.
,
,
.
.
.
8.000
,
,
.
.
.
.



"

" ,

-

...

,

: 39.

12,

,

15.

,

,

.

.

.

,

.

,

.

,

.

.

.

,

.

.

,

.

,

,

:

,

.

. 17.

1962.

26.

1.

1962.

1. 1968.

'73. 16. 1974.

13.

7 : , , ,

60 19. 2015.



,

18. 1936.

1.		7
2.		15
3.		26
4.	,	36
5.		42
6.	()	48
7.		55
8.		60
9.		67
10.		73
11.		77
12.		81
13.		86
14.		89
15.	...	92

